

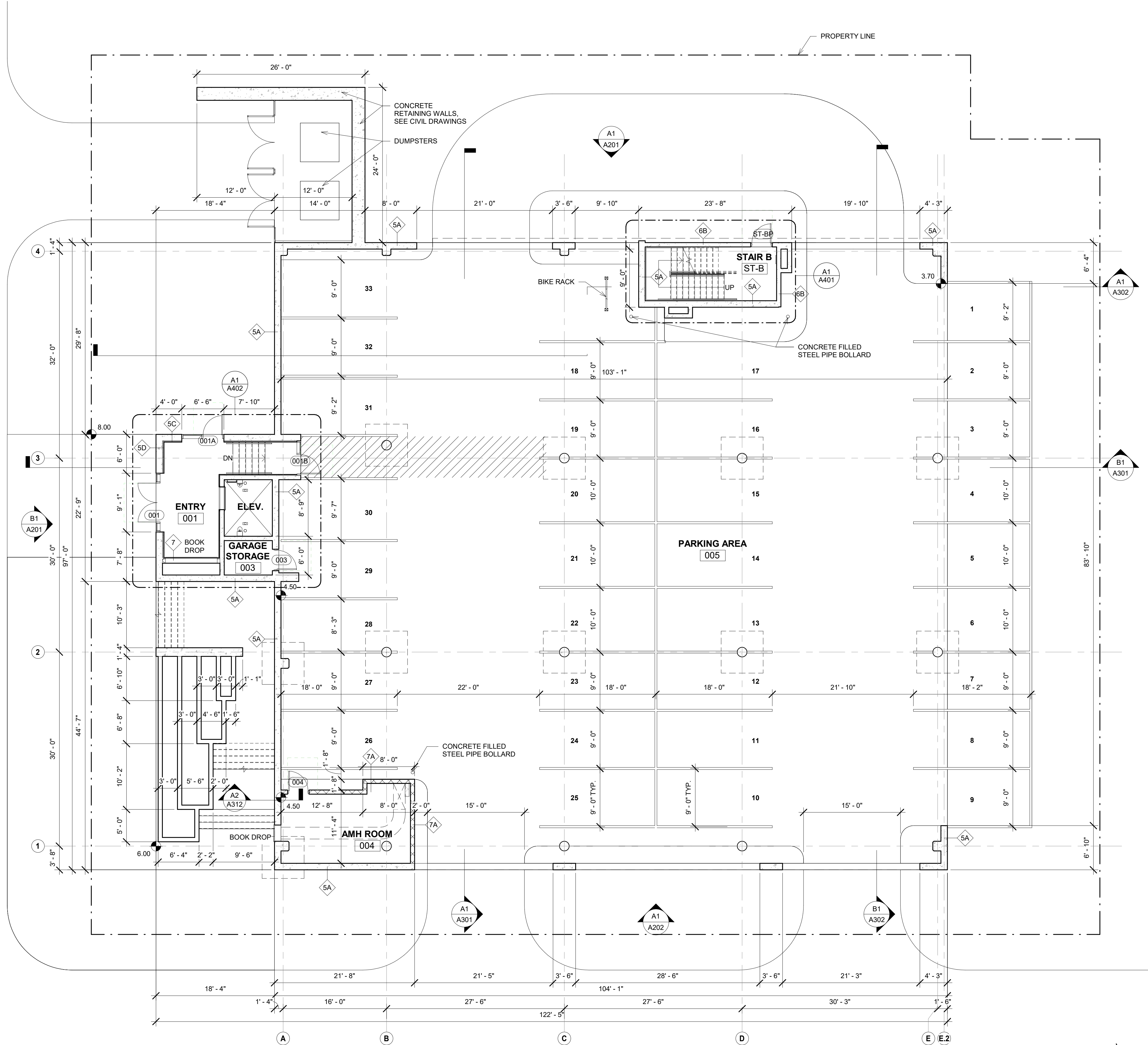
C

B

A

CHESAPEAKE AVE.

A1
A101
PARKING LEVEL FLOOR PLAN
1/8" = 1'-0"



NEW WORK GENERAL NOTES:

- DO NOT SCALE THE DRAWINGS, CONTRACTOR SHALL VERIFY ALL DIMENSIONS, GRADES, BOUNDARIES AND TYPE OF CONSTRUCTION BEFORE PROCEEDING WITH THE WORK AND SHALL IMMEDIATELY REPORT ANY DISCREPANCIES TO A/E. THE DIMENSIONS SHOWN FOR NEW CONSTRUCTION ARE APPROXIMATE.
- PROTECT ALL OPENINGS FROM ELEMENTS THROUGHOUT CONSTRUCTION.
- DIMENSIONS NOTED "CLEAR" ARE TO FACE OF PARTITION FINISH.
- VERIFY ALL ROUGH-IN DIMENSIONS FOR EQUIPMENT PROVIDED IN THIS CONTRACT OR BY OTHERS.
- REPETITIVE FEATURES ARE NOT DRAWN IN THEIR ENTIRETY AND SHALL BE COMPLETELY PROVIDED AS IF DRAWN FULL.
- CAULK AROUND ALL DOOR AND WINDOW ASSEMBLIES AS REQUIRED.
- UNLESS OTHERWISE NOTED, PROVIDE FLOOR FINISH TRANSITIONS AT ALL LOCATIONS WHERE DIS-SIMILAR FLOOR MATERIALS ABUT.
- PATCH AND LEVEL ALL FLOORS.
- PROVIDE BLOCKING IN WALLS TO RECEIVE COUNTERS, SHELVING AND CASEWORK.
- WHERE DOOR IS LOCATED NEAR CORNER OR ROOM AND IS NOT LOCATED BY DIMENSION ON PLAN OR DETAILS, DIMENSION SHALL BE 4 INCHES FROM FACE OF PARTITION TO DOOR OPENING.
- UNLESS OTHERWISE NOTED, PLAN DIMENSIONS ARE TO COLUMN GRID CENTERLINES AND FACE OF GYPSUM BOARD PARTITIONS. WALL PROTECTION, CERAMIC TILE, EXTRA LAYERS OF GYPSUM BOARD AND OTHER WALL FINISHES ARE INSTALLED BEYOND DIMENSION LINE. EXTERIOR WALL DIMENSIONS ARE TO EXTERIOR FACE OF SHEATHING OR CONCRETE.
- DIMENSION NOTED "HOLD" SHALL BE MAINTAINED.
- SEE DRAWING A601 FOR TYPICAL PARTITION SCHEDULE AND DETAILS.
- SEE DRAWING A111 FOR TYPICAL CEILING NOTES.
- SEE DRAWING G001 FOR TYPICAL GRAPHIC SYMBOLS.
- FURNITURE SHOWN FOR REFERENCE ONLY. REFER TO THE I-SERIES DRAWINGS FOR INTERIOR PLANS.

ARCHITECTS
COLIMORE
ARCHITECTS | an ATI company

1240 Key Highway,
Baltimore, Maryland 21230
Telephone: 410 752 3720
www.colimore.com

CIVIL ENGINEER
COLLINS, OLIFF & ASSOCIATES, INC.
SURVEYORS - ENGINEERS
LAND PLANNERS

COLLINS, OLIFF & ASSOCIATES, INC.
110 MAIN STREET
PRINCE FREDERICK, MD 20678

STRUCTURAL ENGINEER
MINCIN PATEL MILANO, INC.
Since 1988
MPM

MINCIN PATEL MILANO
8511 HARFORD ROAD
BALTIMORE, MD 21214

MEP ENGINEER
KIBART
KIBART ENGINEERS
901 DULANEY VALLEY ROAD
SUITE 301
TOWSON, MD 21204

LIBRARY ARCHITECT AND
INTERIOR DESIGNER

HBM ARCHITECTS
INTERIORS
HBM ARCHITECTS
1382 WEST 9TH STREET, SUITE 300
CLEVELAND, OHIO 44113

SEAL

PROFESSIONAL CERTIFICATION:
I CERTIFY THAT THESE DOCUMENTS WERE PREPARED OR
APPROVED BY ME, AND THAT I AM A DULY LICENSED
ARCHITECT UNDER THE LAWS OF THE STATE OF MARYLAND.
LICENSE NUMBER: 16007
EXPIRATION DATE: FEBRUARY 23, 2022
COPYRIGHT 2020, ATI
These drawings are the property of the architects, Colimore an ATI
company. Unauthorized reproduction for any purpose is an
infringement upon copyright laws. Violators will be subject to
prosecution by the fullest extent of the law.

PROJECT NAME:

Calvert Library
Twin Beaches Branch

9101 BAY AVENUE
NORTH BEACH, MD 20714

PROGRESS SET
DECEMBER 15, 2020

ATI PROJECT NO: 20003



MARK	DATE	DESCRIPTION

DRAWN BY:MM

CHECKED BY: TT

PARKING LEVEL FLOOR PLAN

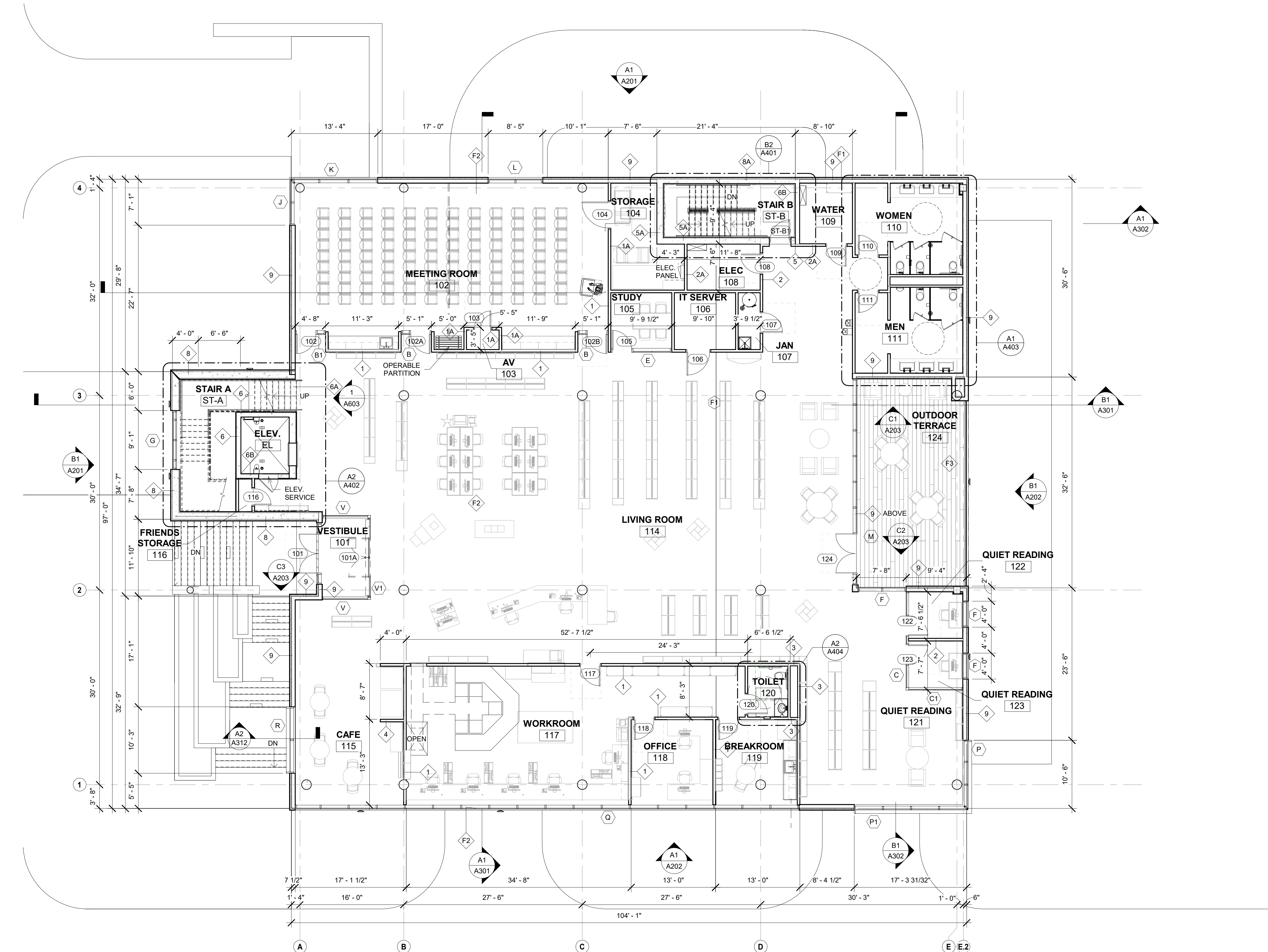
A101

SHEET _____ OF _____

C

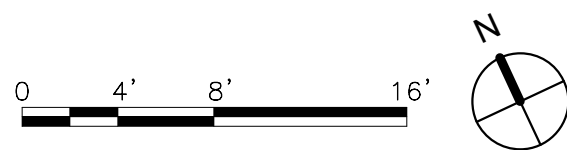
B

A



A1
A102 ENTRY LEVEL FLOOR PLAN

NOTE: ALL WALLS TYPE 1 U.N.O.



NEW WORK GENERAL NOTES:

- DO NOT SCALE THE DRAWINGS. CONTRACTOR SHALL VERIFY ALL DIMENSIONS, GRADES, BOUNDARIES AND TYPE OF CONSTRUCTION BEFORE PROCEEDING WITH THE WORK AND SHALL IMMEDIATELY REPORT ANY DISCREPANCIES TO A/E. THE DIMENSIONS SHOWN FOR NEW CONSTRUCTION ARE APPROXIMATE.
- PROTECT ALL OPENINGS FROM ELEMENTS THROUGHOUT CONSTRUCTION.
- DIMENSIONS NOTED "CLEAR" ARE TO FACE OF PARTITION FINISH.
- VERIFY ALL ROUGH-IN DIMENSIONS FOR EQUIPMENT PROVIDED IN THIS CONTRACT OR BY OTHERS.
- REPETITIVE FEATURES ARE NOT DRAWN IN THEIR ENTIRETY AND SHALL BE COMPLETELY PROVIDED AS IF DRAWN FULL.
- CAULK AROUND ALL DOOR AND WINDOW ASSEMBLIES AS REQUIRED.
- UNLESS OTHERWISE NOTED, PROVIDE FLOOR FINISH TRANSITIONS AT ALL LOCATIONS WHERE DIS-SIMILAR FLOOR MATERIALS ABUT.
- PATCH AND LEVEL ALL FLOORS.
- PROVIDE BLOCKING IN WALLS TO RECEIVE COUNTERS, SHELVING AND CASEWORK.
- WHERE DOOR IS LOCATED NEAR CORNER OR ROOM AND IS NOT LOCATED BY DIMENSION ON PLAN OR DETAILS, DIMENSION SHALL BE 4 INCHES FROM FACE OF PARTITION TO DOOR OPENING.
- UNLESS OTHERWISE NOTED, PLAN DIMENSIONS ARE TO COLUMN GRID CENTERLINES AND FACE OF GYPSUM BOARD PARTITIONS. WALL PROTECTION, CERAMIC TILE, EXTRA LAYERS OF GYPSUM BOARD AND OTHER WALL FINISHES ARE INSTALLED BEYOND DIMENSION LINE. EXTERIOR WALL DIMENSIONS ARE TO EXTERIOR FACE OF SHEATHING OR CONCRETE.
- DIMENSION NOTED "HOLD" SHALL BE MAINTAINED.
- SEE DRAWING A601 FOR TYPICAL PARTITION SCHEDULE AND DETAILS.
- SEE DRAWING A111 FOR TYPICAL CEILING NOTES.
- SEE DRAWING G001 FOR TYPICAL GRAPHIC SYMBOLS.
- FURNITURE SHOWN FOR REFERENCE ONLY. REFER TO THE I-SERIES DRAWINGS FOR INTERIOR PLANS.

ARCHITECTS

COLIMORE
ARCHITECTS | an ATI company

1240 Key Highway,
Baltimore, Maryland 21230
Telephone: 410 752 3720
www.colimore.com

CIVIL ENGINEER

COLLINSON, OLIFF & ASSOCIATES, INC.
SURVEYORS - ENGINEERS
LAND PLANNERS

COLLINSON, OLIFF & ASSOCIATES, INC.
110 MAIN STREET
PRINCE FREDERICK, MD 20678

STRUCTURAL ENGINEER

MINCIN PATEL MILANO, INC.
Since 1988

MINCIN PATEL MILANO
8511 HARFORD ROAD
BALTIMORE, MD 21214

MEP ENGINEER

KIBART
ENGINEERS

KIBART ENGINEERS
901 DULANEY VALLEY ROAD
SUITE 301
TOWSON, MD 21204

LIBRARY ARCHITECT AND
INTERIOR DESIGNER

HBM ARCHITECTS
INTERIORS

HBM ARCHITECTS
1382 WEST 9TH STREET, SUITE 300
CLEVELAND, OHIO 44113

SEAL

PROFESSIONAL CERTIFICATION:
I CERTIFY THAT THESE DOCUMENTS WERE PREPARED OR
APPROVED BY ME, AND THAT I AM A DULY LICENSED
ARCHITECT UNDER THE LAWS OF THE STATE OF MARYLAND.
LICENSE NUMBER: 16007
EXPIRATION DATE: FEBRUARY 23, 2022

COPYRIGHT 2020, ATI

These drawings are the property of the architects, Colimore an ATI
company. Unauthorized reproduction for any purpose is an
infringement upon copyright laws. Violators will be subject to
prosecution by the fullest extent of the law.

PROJECT NAME:

**Calvert Library
Twin Beaches Branch**

9101 BAY AVENUE
NORTH BEACH, MD 20714

PROGRESS SET
DECEMBER 15, 2020

ATI PROJECT NO: 20003



MARK	DATE	DESCRIPTION
------	------	-------------

DRAWN BY: MM

CHECKED BY: TT

ENTRY LEVEL FLOOR PLAN

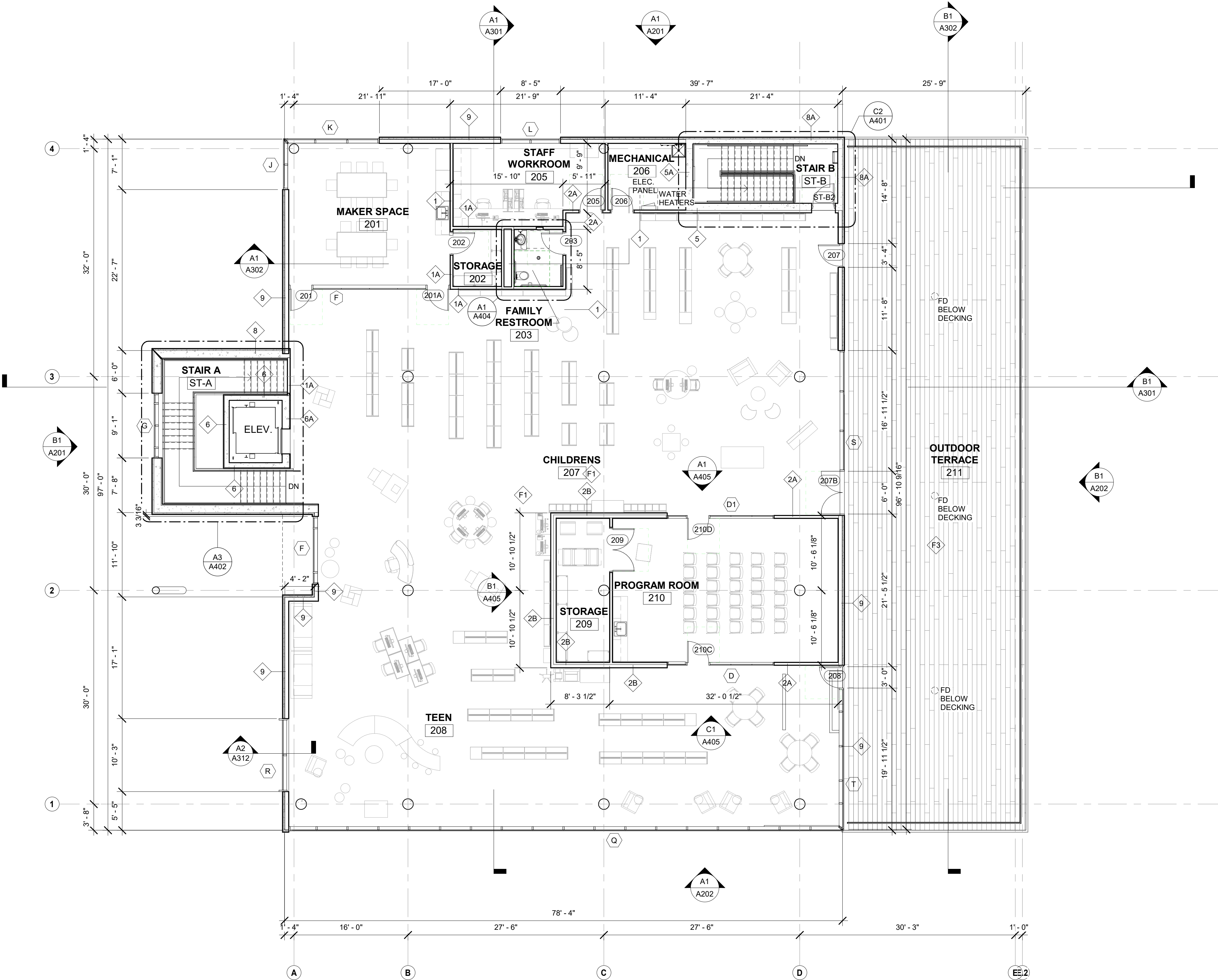
A102

SHEET _____ OF _____

C

B

A



A1
A103
1/8" = 1'-0"
SECOND LEVEL FLOOR PLAN

NEW WORK GENERAL NOTES:

- DO NOT SCALE THE DRAWINGS. CONTRACTOR SHALL VERIFY ALL DIMENSIONS, GRADES, BOUNDARIES AND TYPE OF CONSTRUCTION BEFORE PROCEEDING WITH THE WORK AND SHALL IMMEDIATELY REPORT ANY DISCREPANCIES TO A/E. THE DIMENSIONS SHOWN FOR NEW CONSTRUCTION ARE APPROXIMATE.
- PROTECT ALL OPENINGS FROM ELEMENTS THROUGHOUT CONSTRUCTION.
- DIMENSIONS NOTED "CLEAR" ARE TO FACE OF PARTITION FINISH.
- VERIFY ALL ROUGH-IN DIMENSIONS FOR EQUIPMENT PROVIDED IN THIS CONTRACT OR BY OTHERS.
- REPETITIVE FEATURES ARE NOT DRAWN IN THEIR ENTIRETY AND SHALL BE COMPLETELY PROVIDED AS IF DRAWN FULL.
- CAULK AROUND ALL DOOR AND WINDOW ASSEMBLIES AS REQUIRED.
- UNLESS OTHERWISE NOTED, PROVIDE FLOOR FINISH TRANSITIONS AT ALL LOCATIONS WHERE DIS-SIMILAR FLOOR MATERIALS ABUT.
- PATCH AND LEVEL ALL FLOORS.
- PROVIDE BLOCKING IN WALLS TO RECEIVE COUNTERS, SHELVING AND CASEWORK.
- WHERE DOOR IS LOCATED NEAR CORNER OR ROOM AND IS NOT LOCATED BY DIMENSION ON PLAN OR DETAILS, DIMENSION SHALL BE 4 INCHES FROM FACE OF PARTITION TO DOOR OPENING.
- UNLESS OTHERWISE NOTED, PLAN DIMENSIONS ARE TO COLUMN GRID CENTERLINES AND FACE OF GYPSUM BOARD PARTITIONS. WALL PROTECTION, CERAMIC TILE, EXTRA LAYERS OF GYPSUM BOARD AND OTHER WALL FINISHES ARE INSTALLED BEYOND DIMENSION LINE. EXTERIOR WALL DIMENSIONS ARE TO EXTERIOR FACE OF SHEATHING OR CONCRETE.
- DIMENSION NOTED "HOLD" SHALL BE MAINTAINED.
- SEE DRAWING A601 FOR TYPICAL PARTITION SCHEDULE AND DETAILS.
- SEE DRAWING A111 FOR TYPICAL CEILING NOTES.
- SEE DRAWING G001 FOR TYPICAL GRAPHIC SYMBOLS.
- FURNITURE SHOWN FOR REFERENCE ONLY. REFER TO THE I-SERIES DRAWINGS FOR INTERIOR PLANS.

ARCHITECTS

COLIMORE
ARCHITECTS | an ATI company

1240 Key Highway,
Baltimore, Maryland 21230
Telephone: 410 752 3720
www.colimore.com

CIVIL ENGINEER

COLLINS
COLLINS, OLIFF & ASSOCIATES, INC.
SURVEYORS - ENGINEERS
LAND PLANNERS

COLLINS, OLIFF & ASSOCIATES, INC.
110 MAIN STREET
PRINCE FREDERICK, MD 20678

STRUCTURAL ENGINEER

MINCIN
MINCIN PATEL MILANO, INC.
Since 1988

MINCIN PATEL MILANO
8511 HARFORD ROAD
BALTIMORE, MD 21214

MEP ENGINEER

KIBART
KIBART ENGINEERS

901 DULANEY VALLEY ROAD
SUITE 301
TOWSON, MD 21204

LIBRARY ARCHITECT AND
INTERIOR DESIGNER

HBM
HBM ARCHITECTS

1382 WEST 9TH STREET, SUITE 300
CLEVELAND, OHIO 44113

SEAL

PROFESSIONAL CERTIFICATION:
I CERTIFY THAT THESE DOCUMENTS WERE PREPARED OR
APPROVED BY ME, AND THAT I AM A DULY LICENSED
ARCHITECT UNDER THE LAWS OF THE STATE OF MARYLAND.
LICENSE NUMBER: 16007
EXPIRATION DATE: FEBRUARY 23, 2022
COPYRIGHT 2020, ATI

These drawings are the property of the architects, Colimore an ATI
company. Unauthorized reproduction for any purpose is an
infringement upon copyright laws. Violators will be subject to
prosecution by the fullest extent of the law.

PROJECT NAME:

Calvert Library
Twin Beaches Branch

9101 BAY AVENUE
NORTH BEACH, MD 20714

PROGRESS SET
DECEMBER 15, 2020

ATI PROJECT NO: 20003



MARK	DATE	DESCRIPTION

DRAWN BY: MM

CHECKED BY: TT

SECOND LEVEL FLOOR PLAN

A103

SHEET _____ OF _____



MARK	DATE	DESCRIPTION

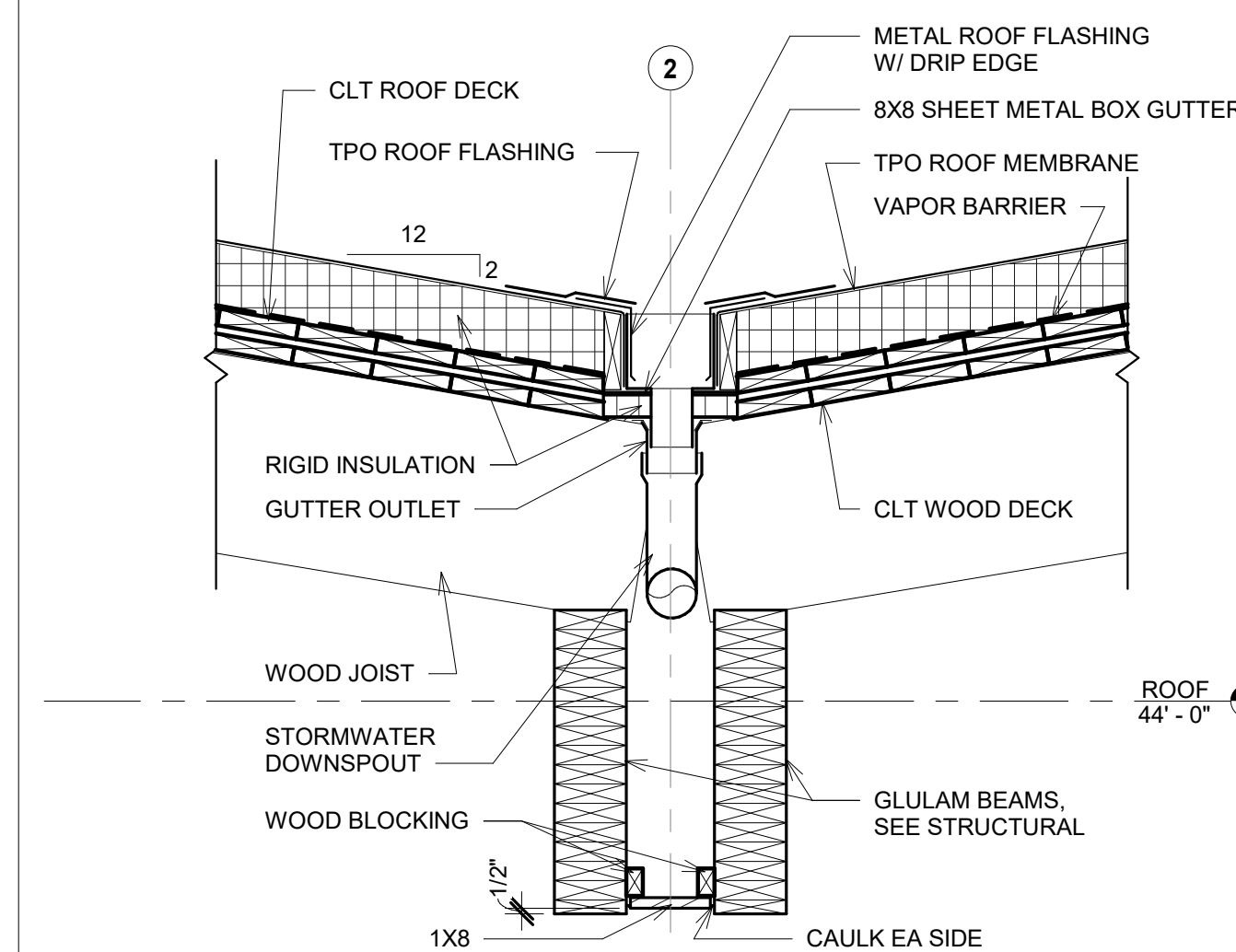
DRAWN BY: Author

CHECKED BY: Checke

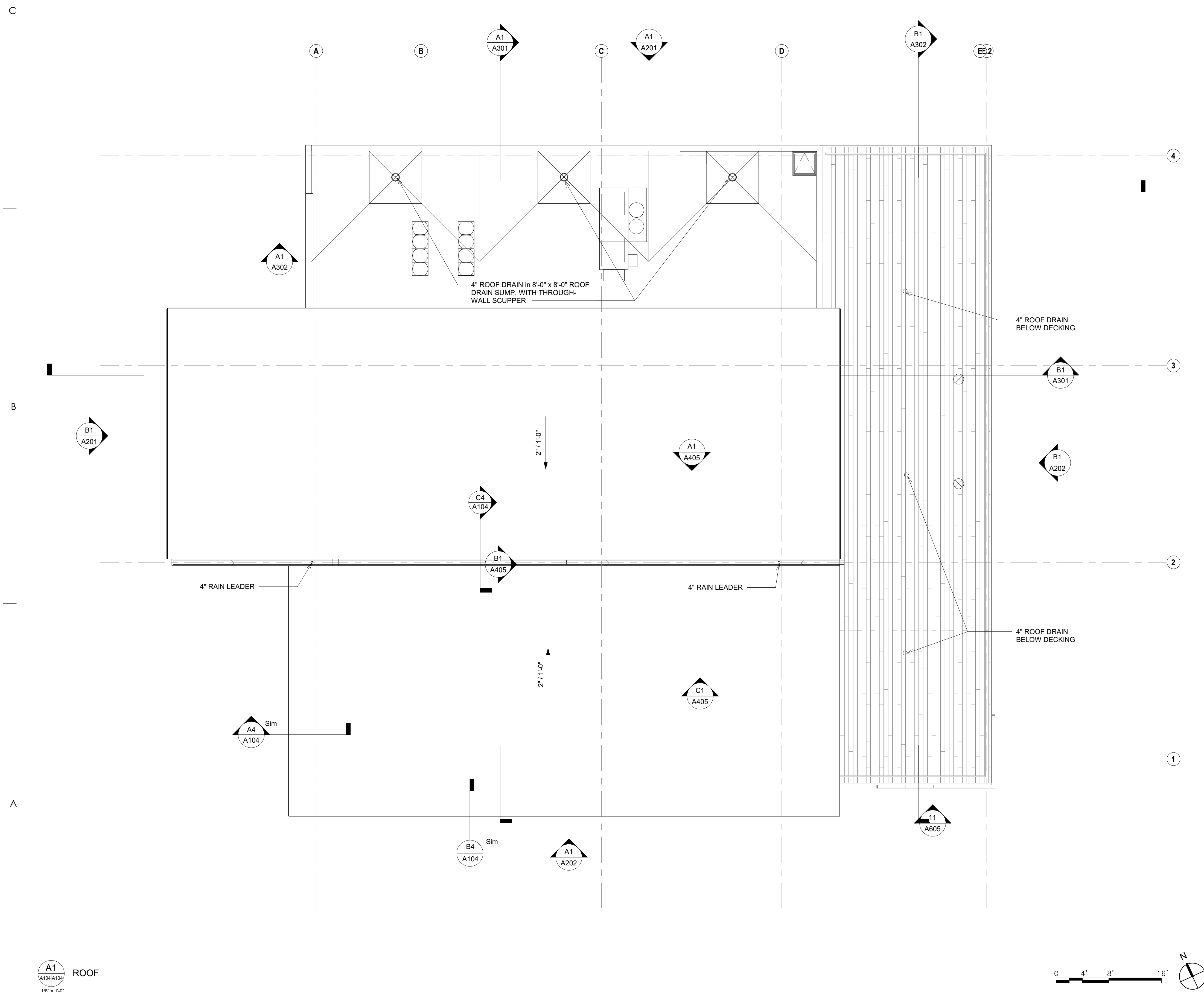
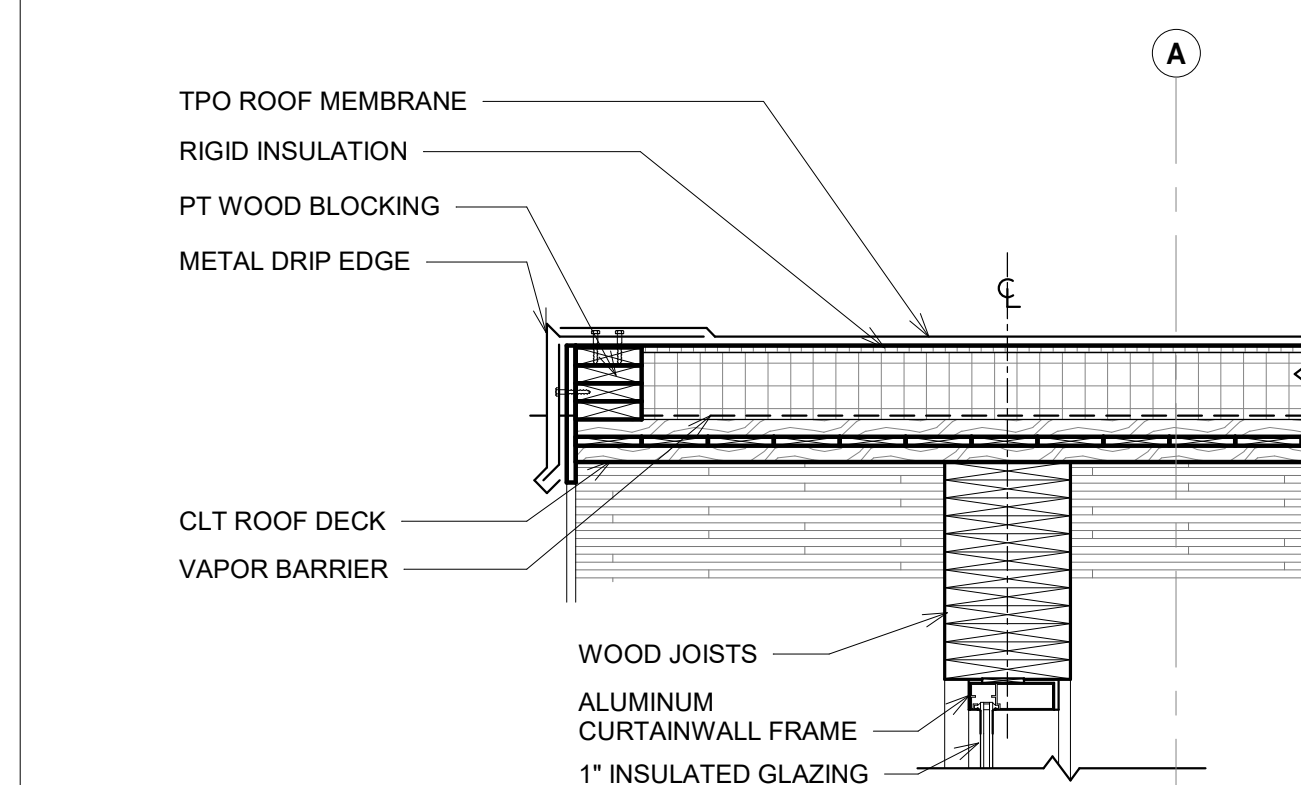
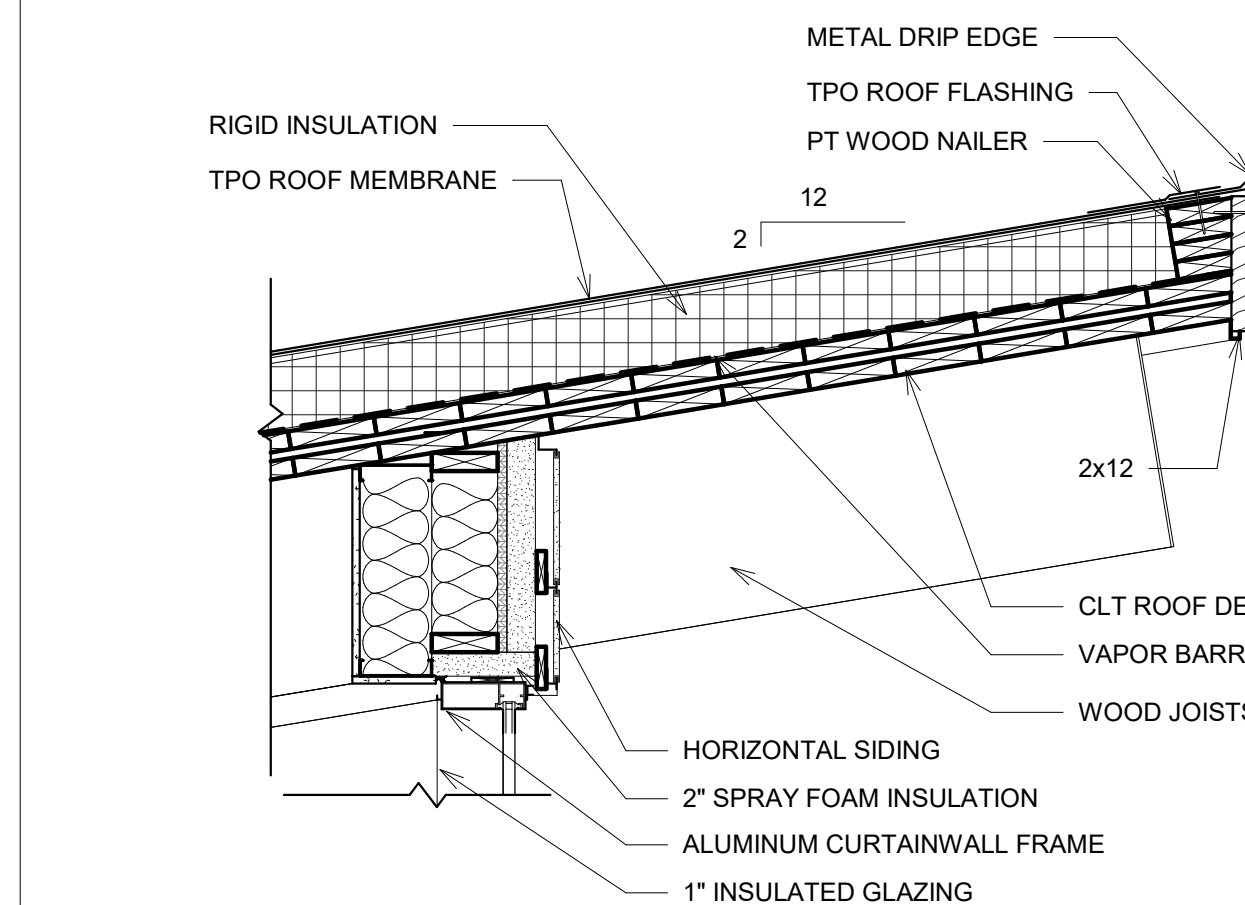
ROOF PLAN

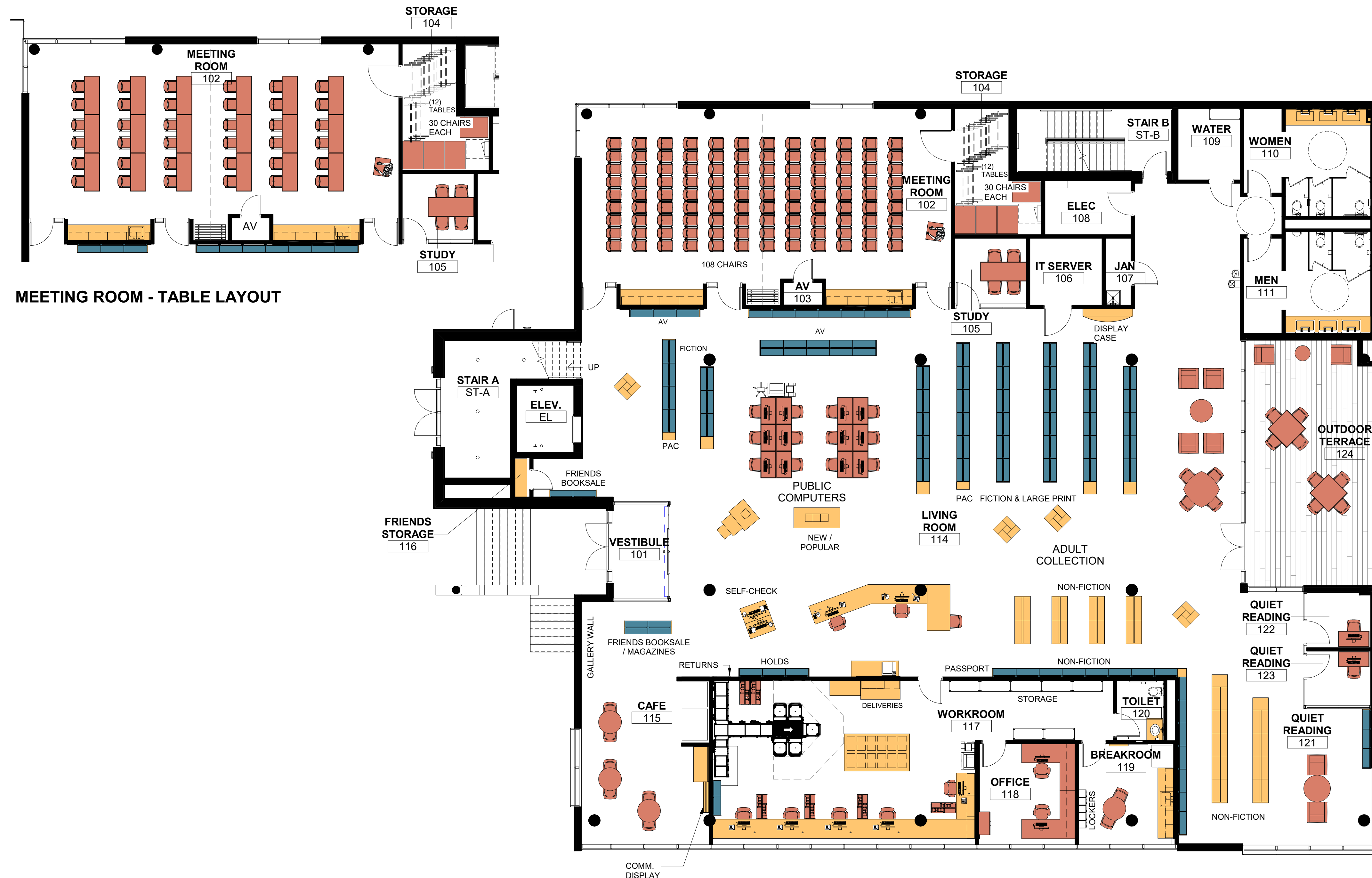
A104

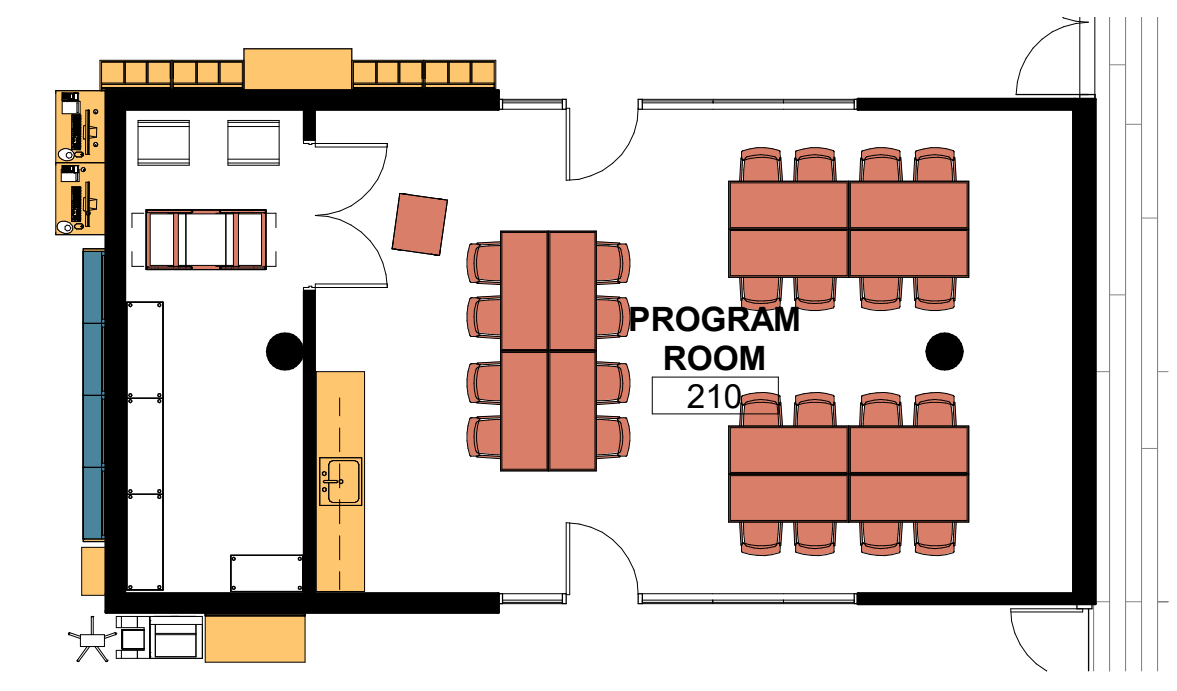
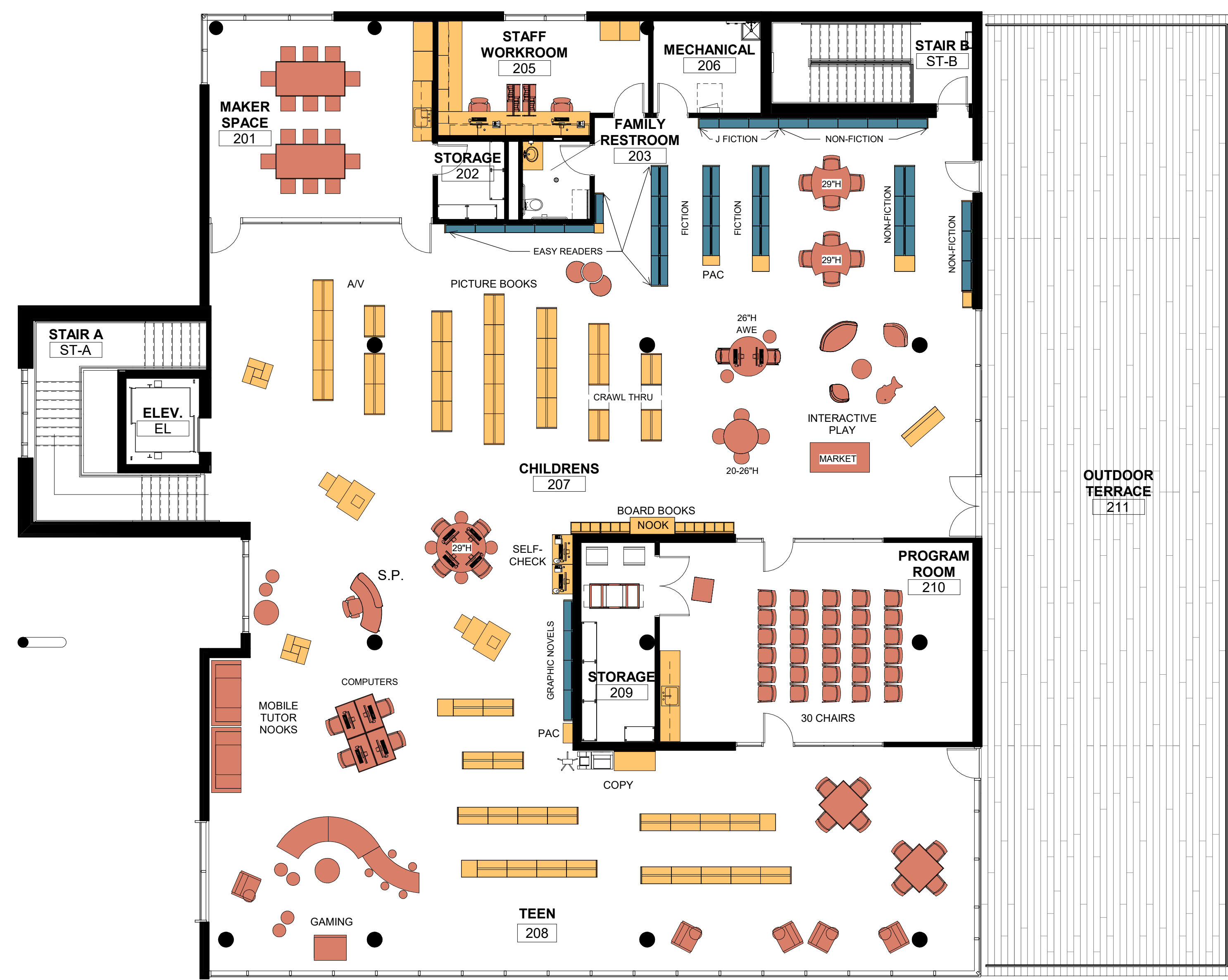
SHEET OF



 **GUTTER DETAIL**







PROGRAM ROOM - TABLE LAYOUT

C

B

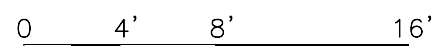
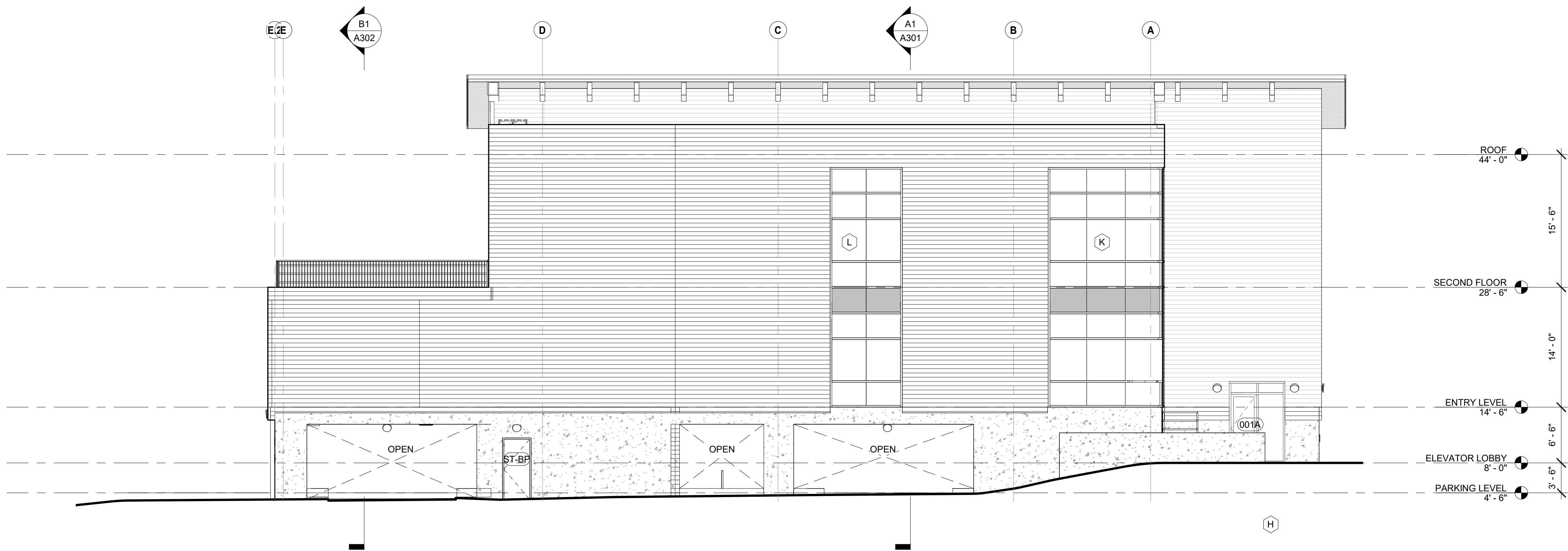
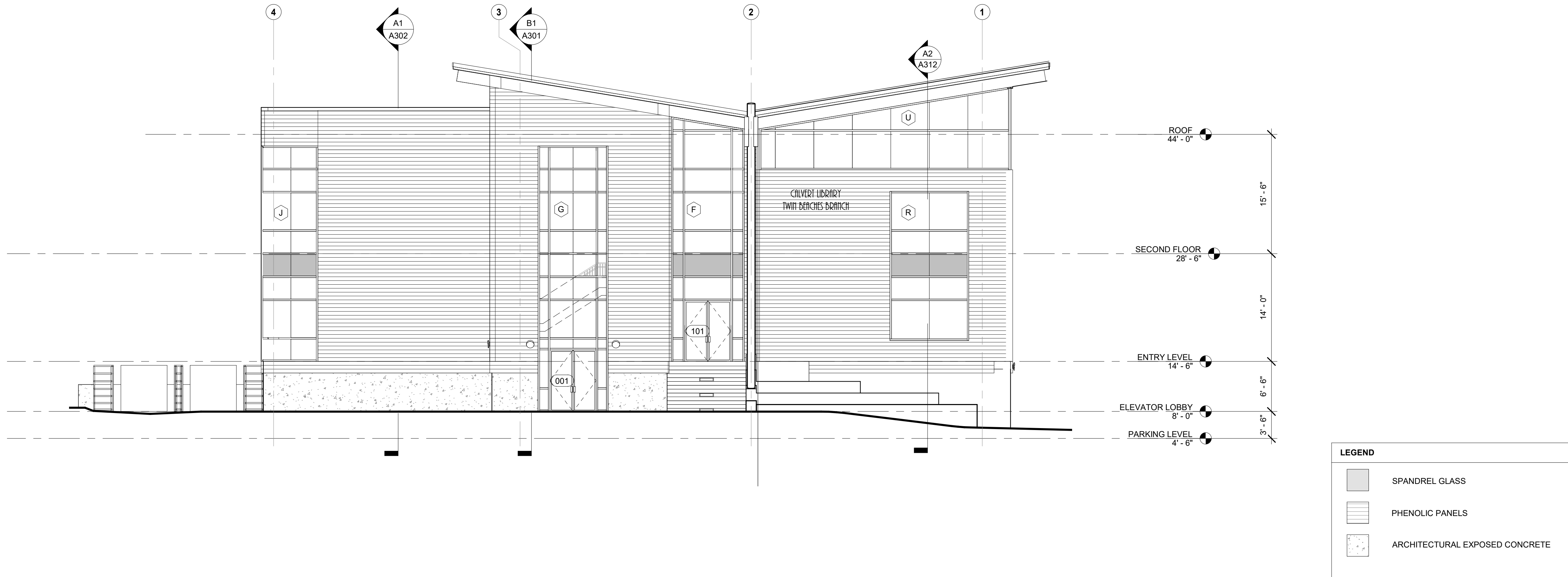
A

B1
A101/A201
1/8" = 1'-0"

WEST ELEVATION

A1
A101/A201
1/8" = 1'-0"

NORTH ELEVATION



ARCHITECTS
COLIMORE
ARCHITECTS | an ATI company

1240 Key Highway,
Baltimore, Maryland 21230
Telephone: 410 752 3720
www.colimore.com

CIVIL ENGINEER
COL COLLINSON, OLIFF & ASSOCIATES, INC.
SURVEYORS - ENGINEERS
LAND PLANNERS
COLLINSON, OLIFF & ASSOCIATES, INC.
110 MAIN STREET
PRINCE FREDERICK, MD 20678

STRUCTURAL ENGINEER
MPM MINCIN PATEL MILANO, INC.
Since 1983
MINCIN PATEL MILANO
6511 HARFORD ROAD
BALTIMORE, MD 21214

MEP ENGINEER
KIBART KIBART ENGINEERS
901 DULANEY VALLEY ROAD
SUITE 301
TOWSON, MD 21204

**LIBRARY ARCHITECT AND
INTERIOR DESIGNER**
HBM ARCHITECTS
INTERIORS
HBM ARCHITECTS
1382 WEST 9TH STREET, SUITE 300
CLEVELAND, OHIO 44113

SEAL

PROFESSIONAL CERTIFICATION:
I CERTIFY THAT THESE DOCUMENTS WERE PREPARED OR
APPROVED BY ME, AND THAT I AM A DULY LICENSED
ARCHITECT UNDER THE LAWS OF THE STATE OF MARYLAND.
LICENSE NUMBER: 16007
EXPIRATION DATE: FEBRUARY 23, 2022
COPYRIGHT 2020, ATI

These drawings are the property of the architects, Colimore an ATI
company. Unauthorised reproduction for any purpose is an
infringement upon copyright laws. Violators will be subject to
prosecution by the fullest extent of the law.

PROJECT NAME:
**Calvert Library
Twin Beaches Branch**

9101 BAY AVENUE
NORTH BEACH, MD 20714

PROGRESS SET
JANUARY 11, 2021

ATI PROJECT NO: 20003



MARK	DATE	DESCRIPTION

DRAWN BY: Author
CHECKED BY: Checker
BUILDING ELEVATIONS

A201
SHEET _____ OF _____

C

B

A

B1
A102/A202
1/8" = 1'-0"

EAST ELEVATION

A1
A202
1/8" = 1'-0"

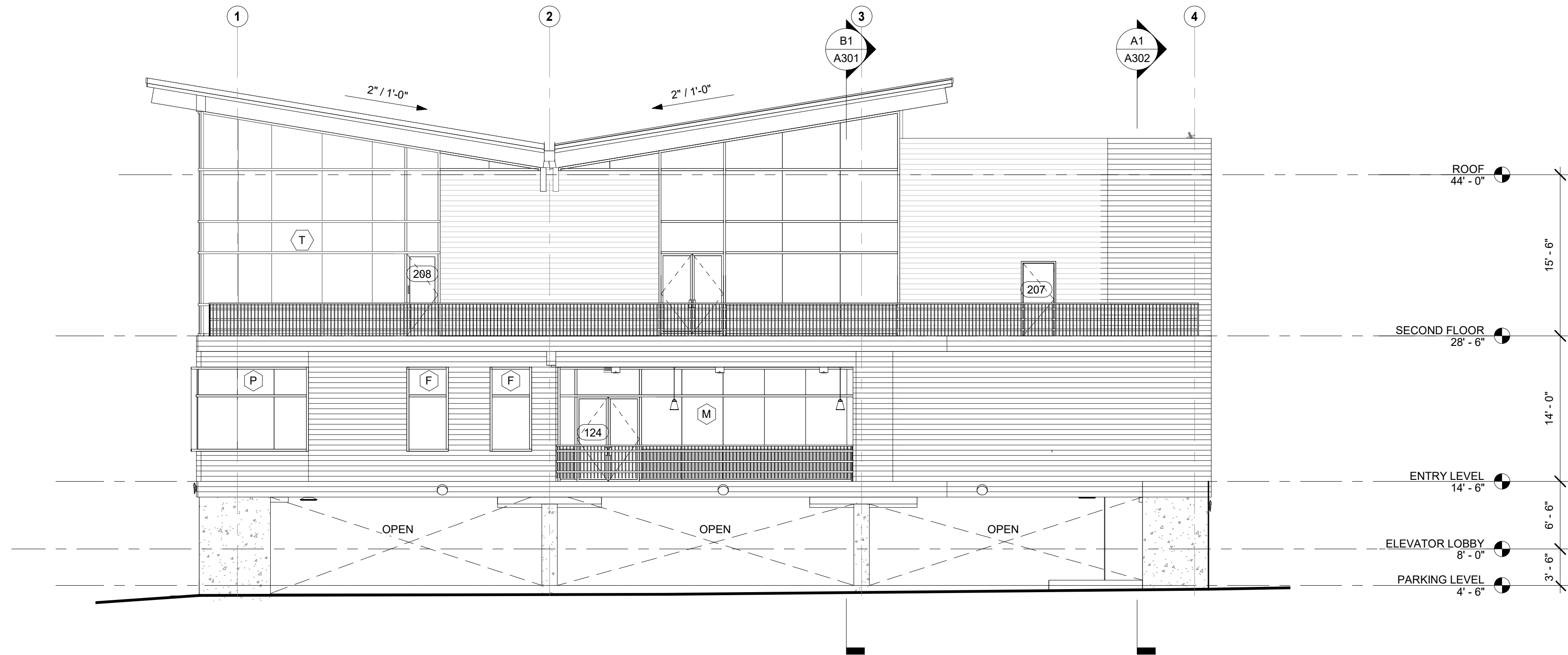
SOUTH ELEVATION

1

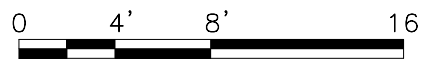
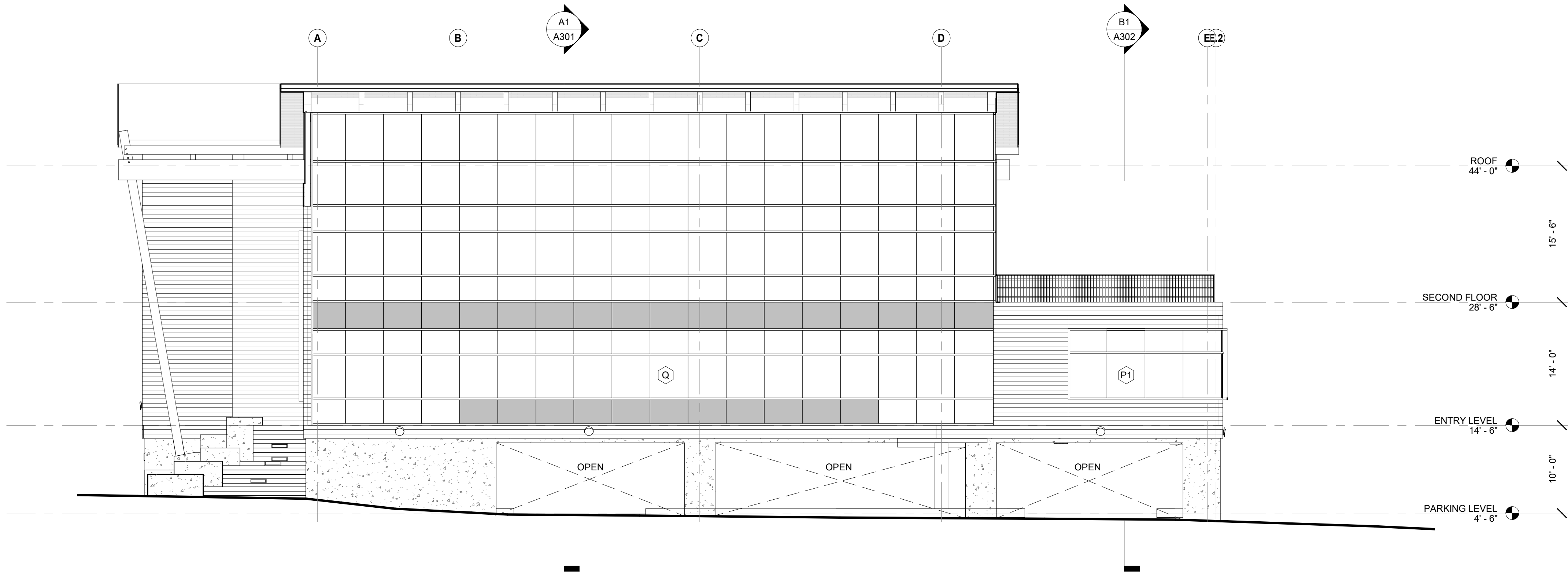
2

3

4



LEGEND	
	SPANDREL GLASS
	PHENOLIC PANELS
	ARCHITECTURAL EXPOSED CONCRETE



ARCHITECTS
COLIMORE
ARCHITECTS | an ATI company

1240 Key Highway,
Baltimore, Maryland 21230
Telephone: 410 752 3720
www.colimore.com

CIVIL ENGINEER
COLLINS COLLINSON, OLIFF & ASSOCIATES, INC.
SURVEYORS - ENGINEERS
LAND PLANNERS
COLLINSON, OLIFF & ASSOCIATES, INC.
110 MAIN STREET
PRINCE FREDERICK, MD 20678

STRUCTURAL ENGINEER
MPM MINCIN PATEL MILANO, INC.
Since 1983
MINCIN PATEL MILANO
6511 HARFORD ROAD
BALTIMORE, MD 21214

MEP ENGINEER
KIBART KIBART ENGINEERS
901 DULANEY VALLEY ROAD
SUITE 301
TOWSON, MD 21204

**LIBRARY ARCHITECT AND
INTERIOR DESIGNER**
HBM HBM ARCHITECTS
1382 WEST 9TH STREET, SUITE 300
CLEVELAND, OHIO 44113

SEAL

PROFESSIONAL CERTIFICATION:
I CERTIFY THAT THESE DOCUMENTS WERE PREPARED OR
APPROVED BY ME, AND THAT I AM A DULY LICENSED
ARCHITECT UNDER THE LAWS OF THE STATE OF MARYLAND.
LICENSE NUMBER: 16007
EXPIRATION DATE: FEBRUARY 23, 2022
COPYRIGHT 2020, ATI
These drawings are the property of the architects, Colimore an ATI
company. Unauthorized reproduction for any purpose is an
infringement upon copyright laws. Violators will be subject to
prosecution by the fullest extent of the law.

PROJECT NAME:
**Calvert Library
Twin Beaches Branch**
9101 BAY AVENUE
NORTH BEACH, MD 20714

PROGRESS SET
JANUARY 11, 2021

ATI PROJECT NO: 20003



MARK	DATE	DESCRIPTION

DRAWN BY: Author
CHECKED BY: Checker
BUILDING ELEVATIONS

A202
SHEET _____ OF _____